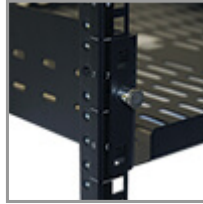
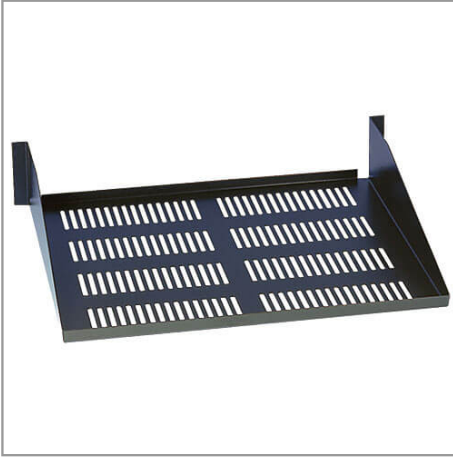


SmartRack 2U Cantilever Toolless Mount Fixed Shelf (50 lbs /22.7 kgs capacity; 18 in./457 mm Deep)

MODEL NUMBER: **SRSHELF2PTM**



Highlights

- Fixed Shelf, 2U Cantilever Mount
- 4-post rack compatible
- 18-inch shelf depth
- Snap-in toolless mounting

Package Includes

- SRSHELF2PTM Shelf

Description

The SRSHELF2PTM allows you to add a shelf to a 4-post rack to accommodate tower UPS systems, monitors or any other equipment that is not rack mounted. The unit supports 50 pounds (22.7 kilograms) with an 18-inch depth.

Features

- Ideal for adding extra flat surfaces or shelf space in 4-post rack enclosures
- Supports a load of up to 50 lbs (22.7 kgs)
- 18-inch shelf depth to accommodate a wide variety of equipment
- Snap-in toolless mounting
- Vented design increases airflow to sensitive equipment
- Heavy-duty, cold-rolled steel construction with black finish

Specifications

OVERVIEW	
UPC Code	037332184672
Accessory Type	Rack Shelves
Accessory Class	Rack Accessories
PHYSICAL	
Shipping Dimensions (hwd / in.)	20.30 x 4.00 x 19.60
Shipping Dimensions (hwd / cm)	51.56 x 10.16 x 49.78
Shipping Weight (lbs.)	6.00



Powering Business Worldwide



Shipping Weight (kg)	2.72
Unit Dimensions (hwd / in.)	3.500 x 19.000 x 18.000
Unit Dimensions (hwd / cm)	8.89 x 48.26 x 45.72
Unit Weight (lbs.)	5
Unit Weight (kg)	2.27
FEATURES & SPECIFICATIONS	
IP68 Rated	No
IP20 Rated	No
STANDARDS & COMPLIANCE	
Product Compliance	RoHS; EIA/ECA-310-E
WARRANTY & SUPPORT	
Product Warranty Period (Worldwide)	5-year limited warranty

1000 Eaton Boulevard
Cleveland, OH 44122
United States
<https://tripplite.eaton.com>

© 2024 Eaton. All Rights Reserved.
Eaton is a registered trademark. All other trademarks
are the property of their respective owners.